

Jahrgangsstufentest **ENGLISCH** an bayerischen Realschulen (2022)

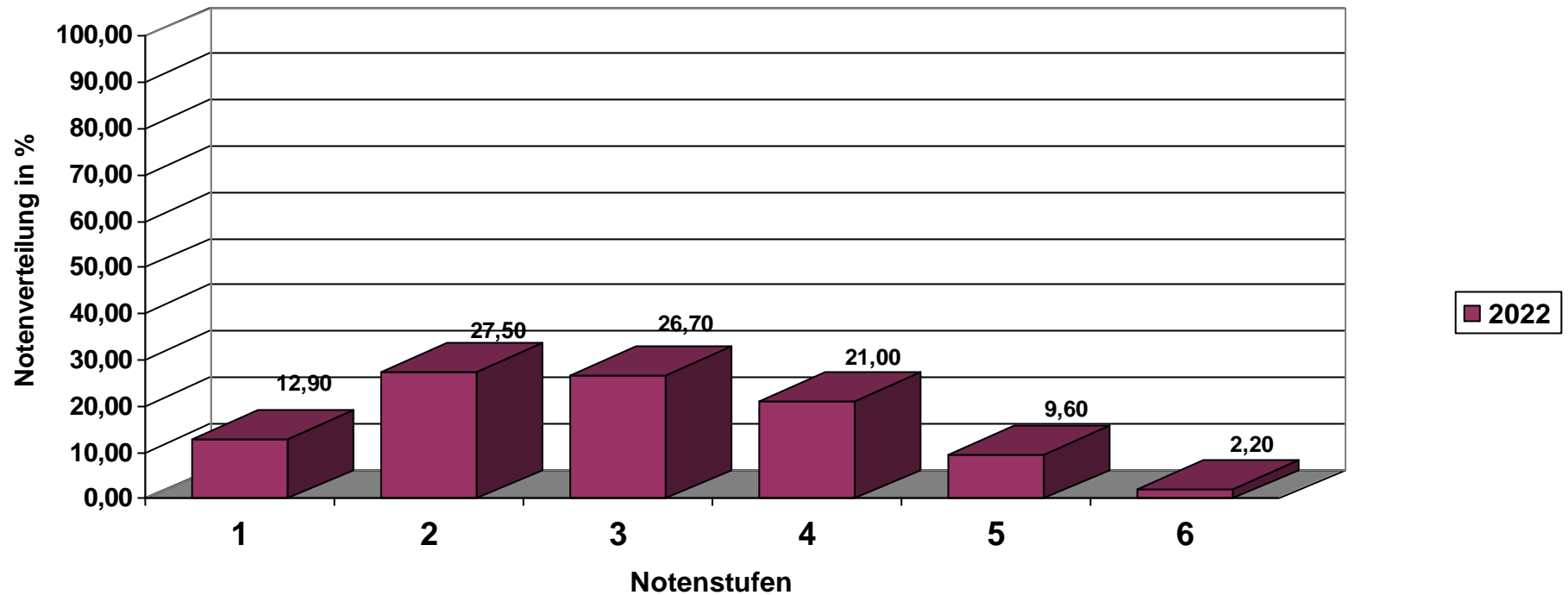
Teilnehmende: **33185 Schülerinnen und Schüler der Jahrgangsstufe 7**

Erläuterung der einzelnen Aufgaben:

Skill	Task	Task Type and Focus	No. of items	Task Format
Listening	1	Matching. Listening to identify key information .	5	Short neutral or informal dialogues. Five items and eight options.
Listening	2	Multiple-choice. Listening to identify key information and details .	5	Longer neutral or informal dialogue. Five discrete three-option multiple-choice items.
Listening	3	Note-taking. Listening to identify details (e.g. numbers, spelling of names etc.).	5	Longer neutral or informal monologue or dialogue. Five gaps to fill with one or more words or numbers (one example given).
Reading	1	Matching. Gist understanding of real-world notices or messages. Reading for main message .	8	Matching notices with statements. Eight items and twelve options (one example given).
Reading	2	Multiple-Choice. Reading for detailed understanding and main idea(s).	7	One long text adapted from authentic newspaper or magazine articles. Seven multiple-choice items (true/false/not in text).
Writing	1	Continuous writing. Writing a short e-mail, picture-based story or blog of 60 words or more.	15	Short input phrase, rubric or pictures to prompt a written response. Three main messages to communicate.
Use of English	1	Matching. Functional language. Reading and identifying appropriate response .	5	Gapped dialogue. Five gaps to fill with appropriate statements (five items and eight options; one example given).
Use of English	2	Multiple-choice cloze. Reading and identifying appropriate words with focus on structure and/or lexis.	10	Gapped text. Ten gaps to fill with appropriate structure/lexis (plus an integrated example).

Jahrgangsstufentest **ENGLISCH** an bayerischen Realschulen (2022)

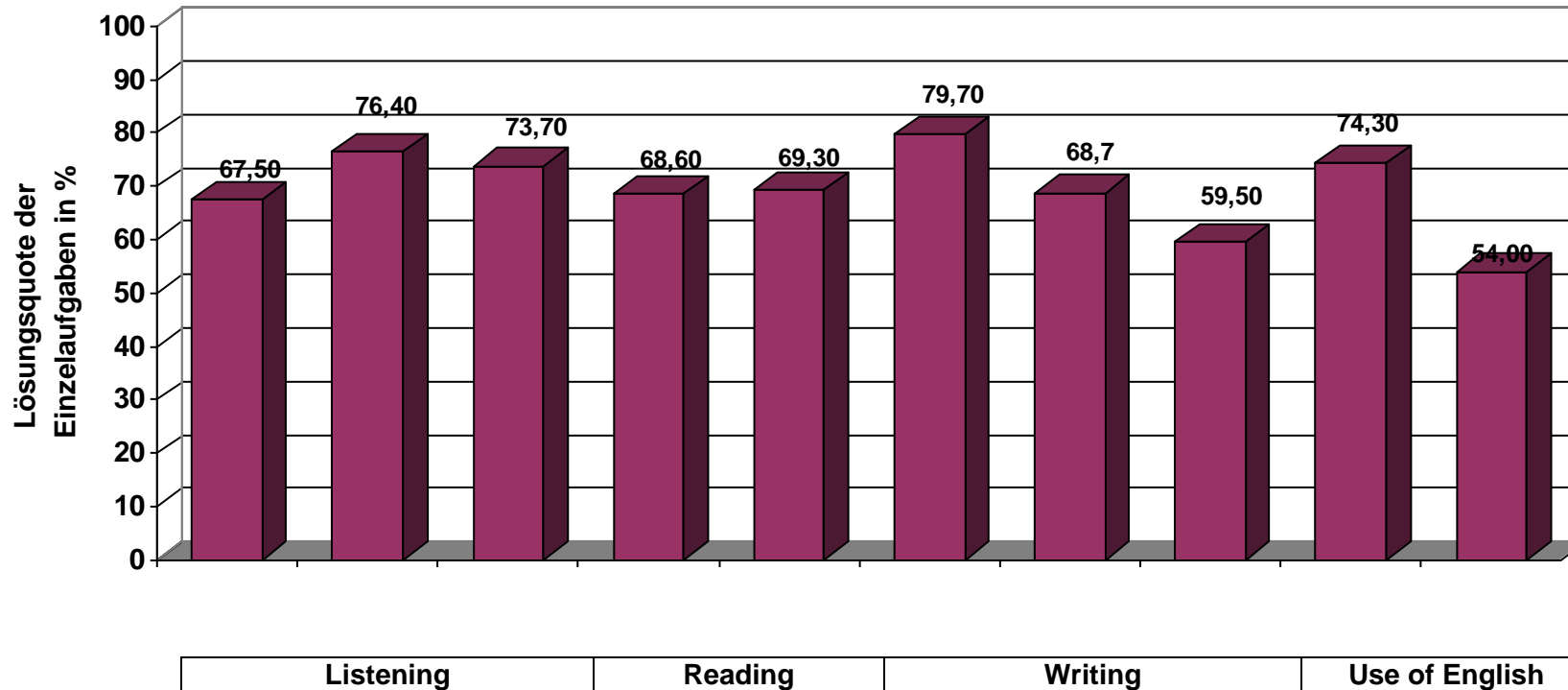
Notenverteilung



Gesamtschnitt: **2,93**

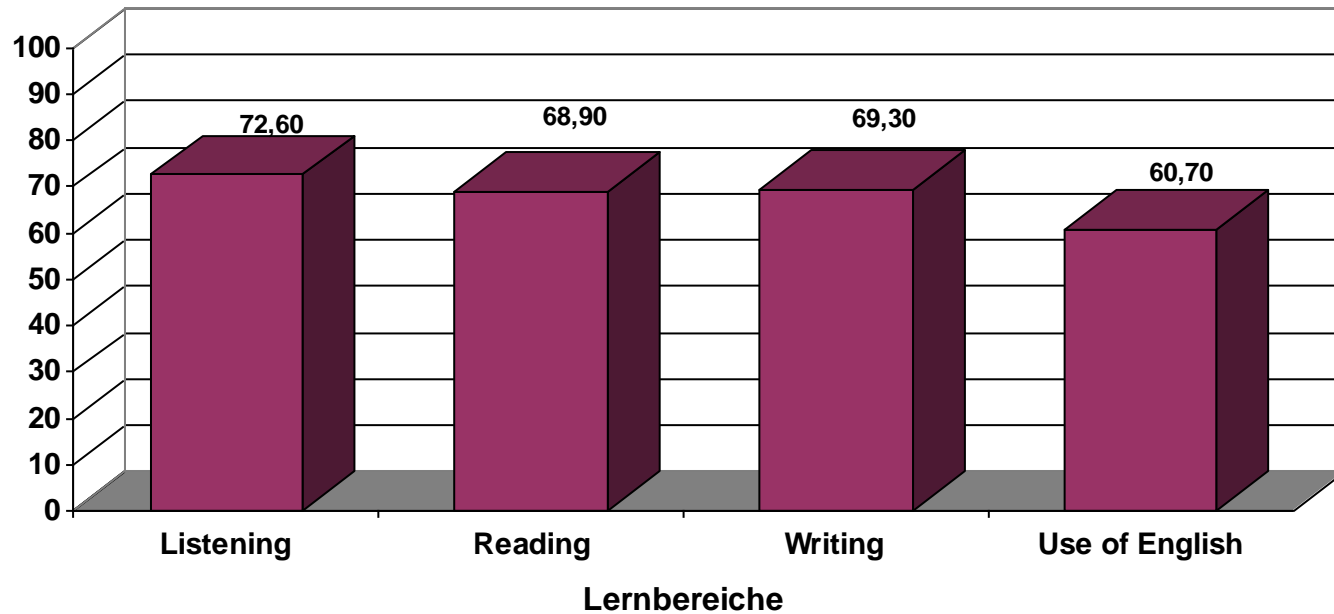
Jahrgangsstufentest **ENGLISCH** an bayerischen Realschulen (2022)

Einzelaufgaben: Lösungsquoten in Prozent



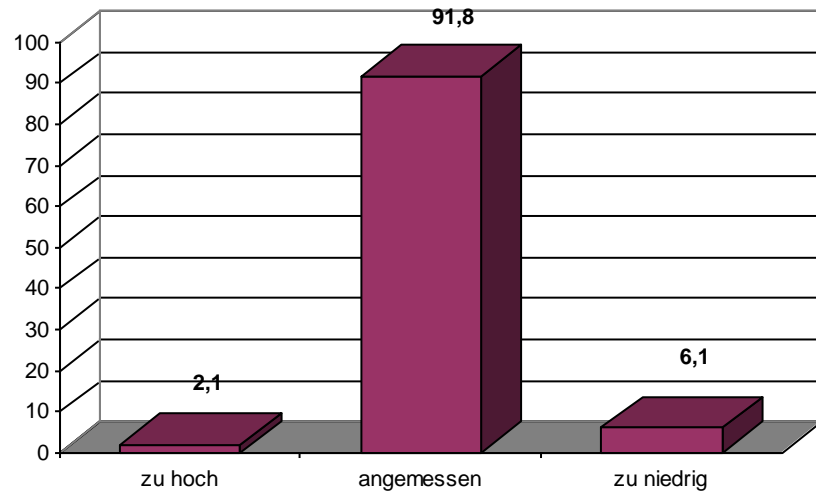
Jahrgangsstufentest ENGLISCH an bayerischen Realschulen (2022)

Lernbereiche: Lösungsquoten in Prozent

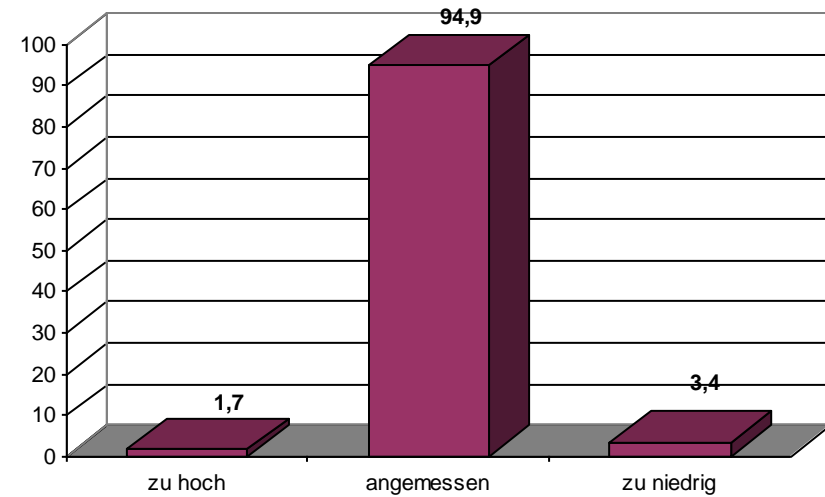


Jahrgangsstufentest ENGLISCH (2022)

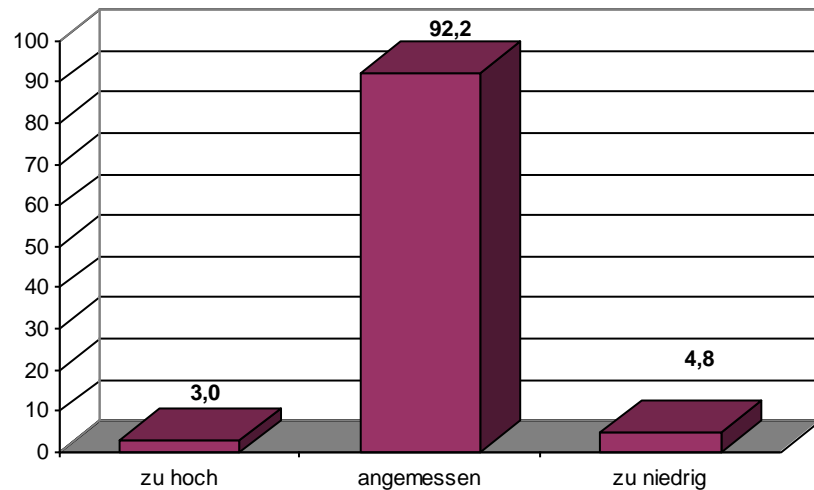
Rückmeldung der Lehrkräfte: Bewertung des Anforderungsniveaus (in %)



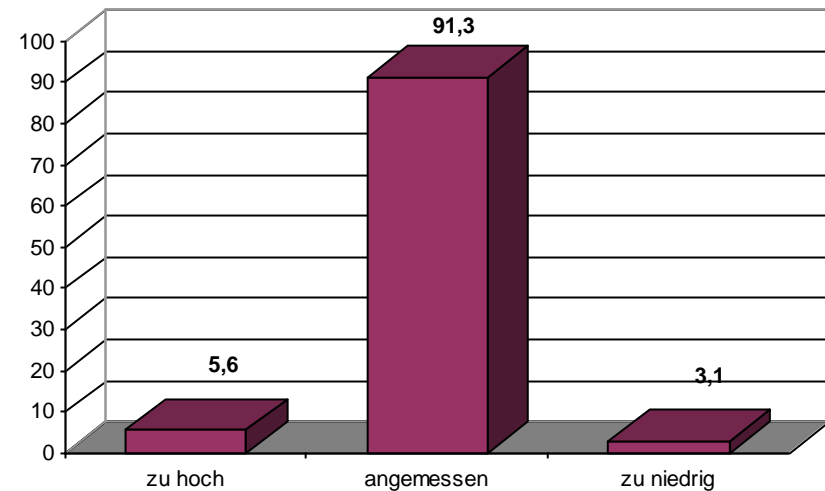
Listening



Reading



Writing



Use of English

Jahrgangsstufentest ENGLISCH (2022)

Rückmeldung der Lehrkräfte: Bewertung der Arbeitszeit (in %)

