

Jahrgangsstufentest ENGLISCH

an bayerischen Realschulen (2008)

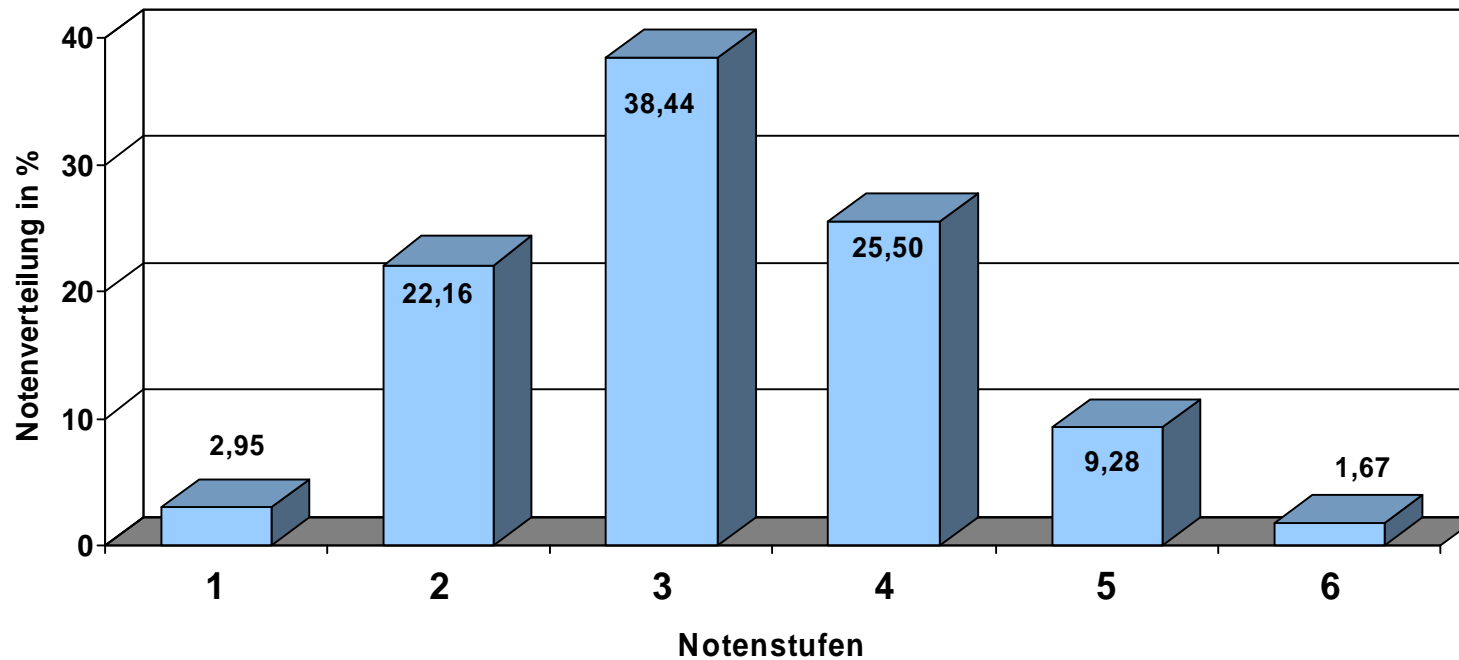
Teilnehmer: 39414 Schülerinnen und Schüler der 7. Jahrgangsstufe

Erläuterung der einzelnen Aufgaben:

Skill	Part	Task Type and Focus	No. of items	Task Format
Listening	1	Three-option multiple-choice. Listening to identify key information .	5	Short neutral or informal dialogues. Five discrete three-option multiple-choice items with visuals.
Listening	2	Matching. Listening to identify key information .	5	Longer neutral or informal dialogue. Five items and eight options.
Listening	3	Gap-fill. Listening and writing down information (including spelling of names, places etc.).	5	Longer neutral or informal monologue. Five gaps to fill with one or more words or numbers.
Reading	1	Matching. Gist understanding of real-world notices. Reading for main message .	8	Matching 8 prompt sentences to 12 notices, including one example.
Reading	2	Multiple-Choice. Reading for detailed understanding and main idea(s) .	7	One long text with maximum length of 230 words adapted from authentic newspaper and magazine articles.
Writing		Continuous writing. Writing a short message, note, postcard or e-mail of about 60 words.	15	Short input text or rubric to prompt a written response. Four messages to communicate.
Use of English	1	Three-option multiple-choice. Functional language . Reading and identifying appropriate response.	6	Six discrete three-option multiple-choice items (plus an example) focusing on verbal exchange patterns.
Use of English	2	Open cloze. Reading and identifying appropriate words with focus on structure and/or lexis.	9	Text of type candidates could be expected to write, for example a short letter or postcard. Nine spaces to fill with one word plus an integrated example.

Jahrgangsstufentest **ENGLISCH** an bayerischen Realschulen (2008)

Notenverteilung

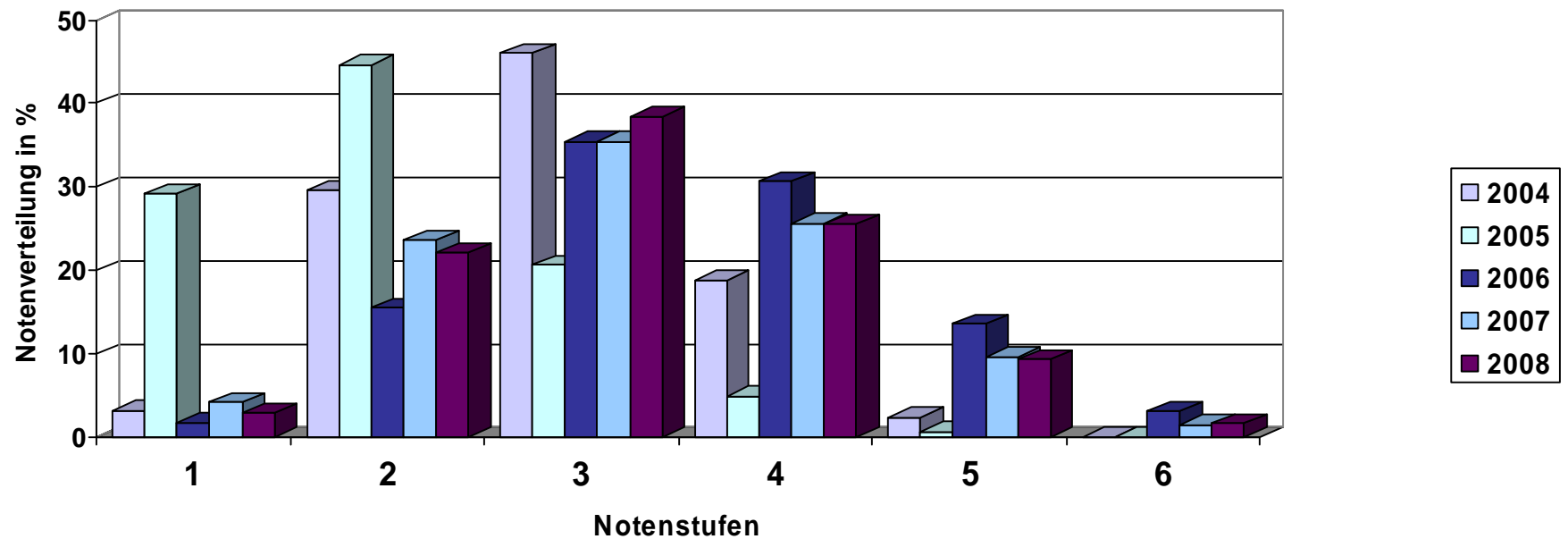


Gesamtschnitt: **3,21**

Jahrgangsstufentest ENGLISCH

an bayerischen Realschulen (2008)

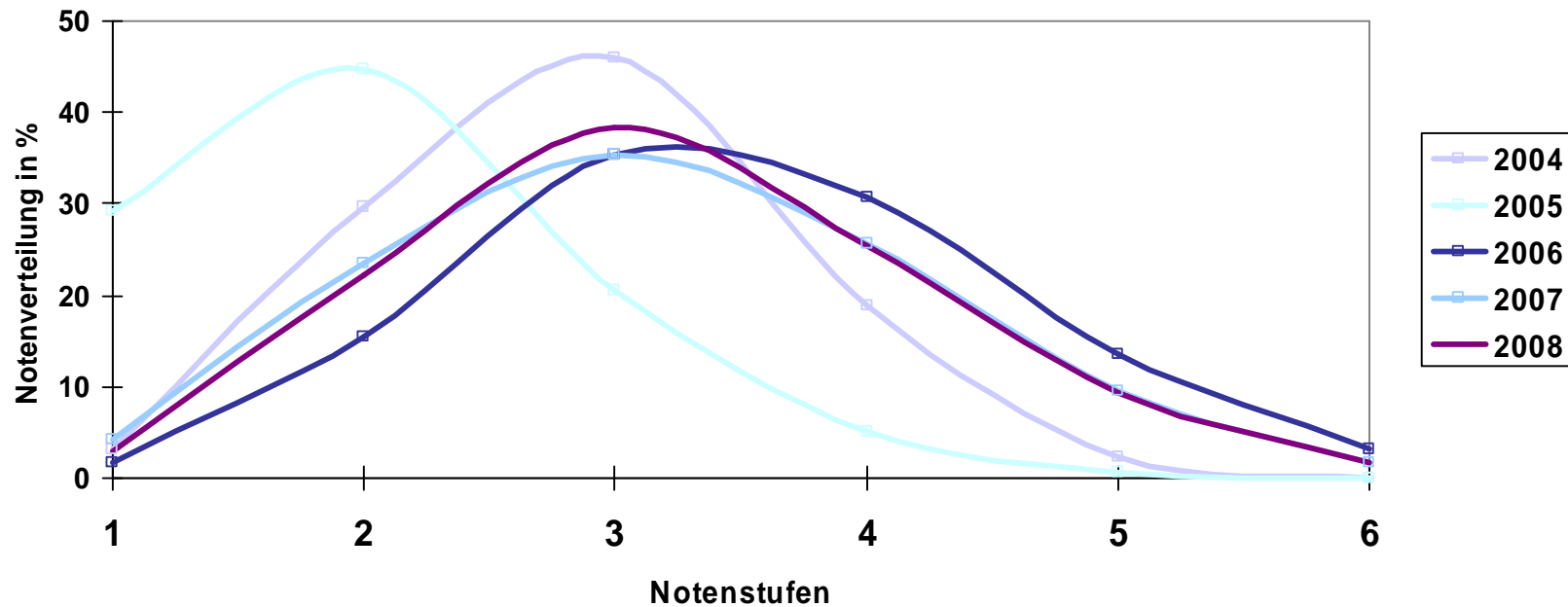
Notenverteilung: Vergleich 2004-2008



Jahrgangsstufentest ENGLISCH

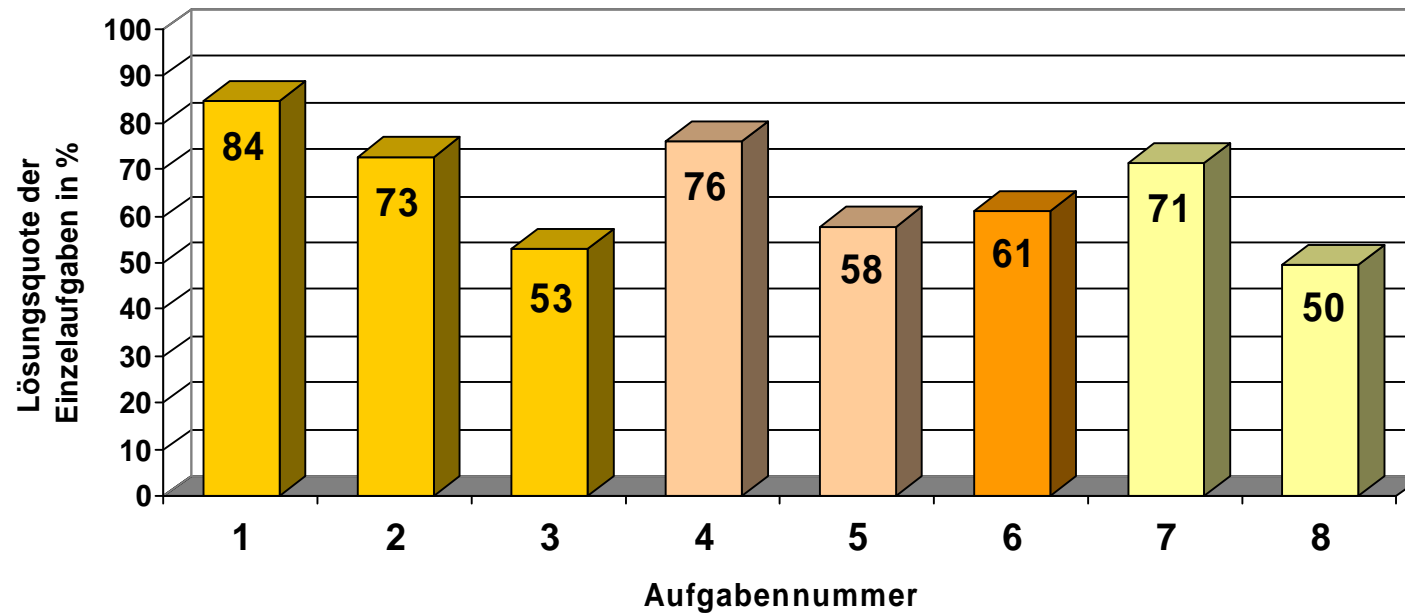
an bayerischen Realschulen (2008)

Notenverteilung: Vergleich 2004-2008



Jahrgangsstufentest **ENGLISCH** an bayerischen Realschulen (2008)

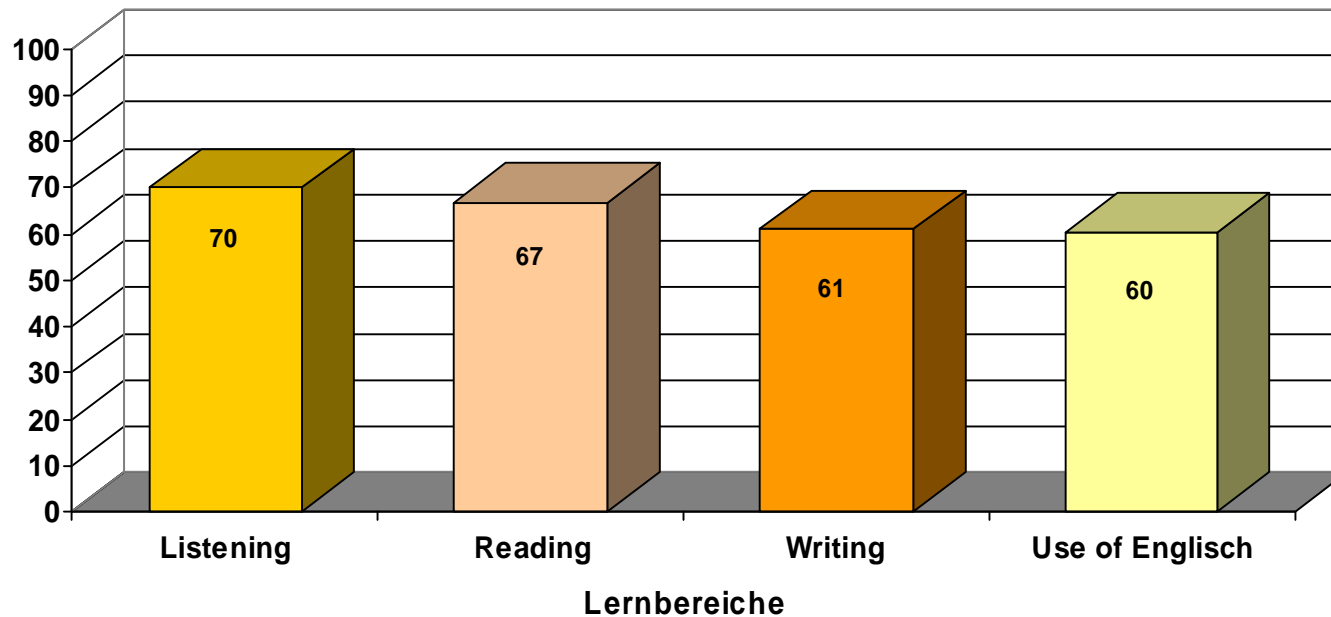
Einzelaufgaben: Lösungsquoten in Prozent



Jahrgangsstufentest ENGLISCH

an bayerischen Realschulen (2008)

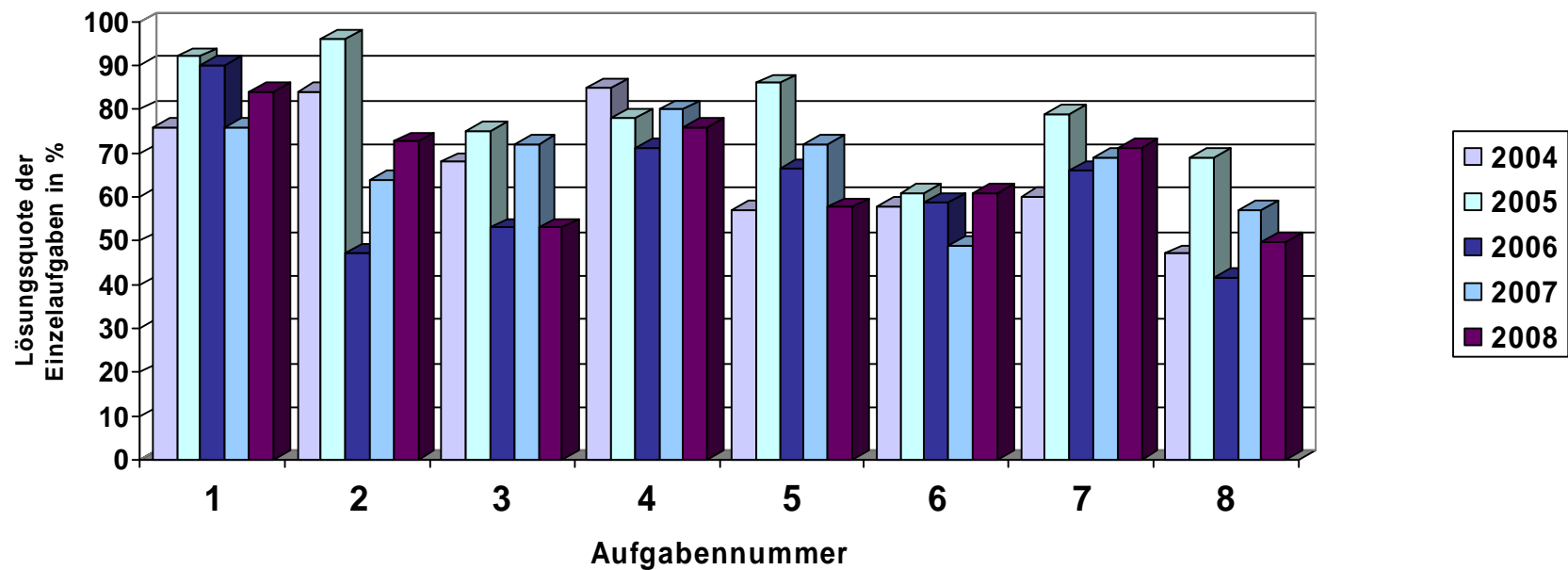
Lernbereiche: Lösungsquoten in Prozent



Jahrgangsstufentest ENGLISCH

an bayerischen Realschulen (2008)

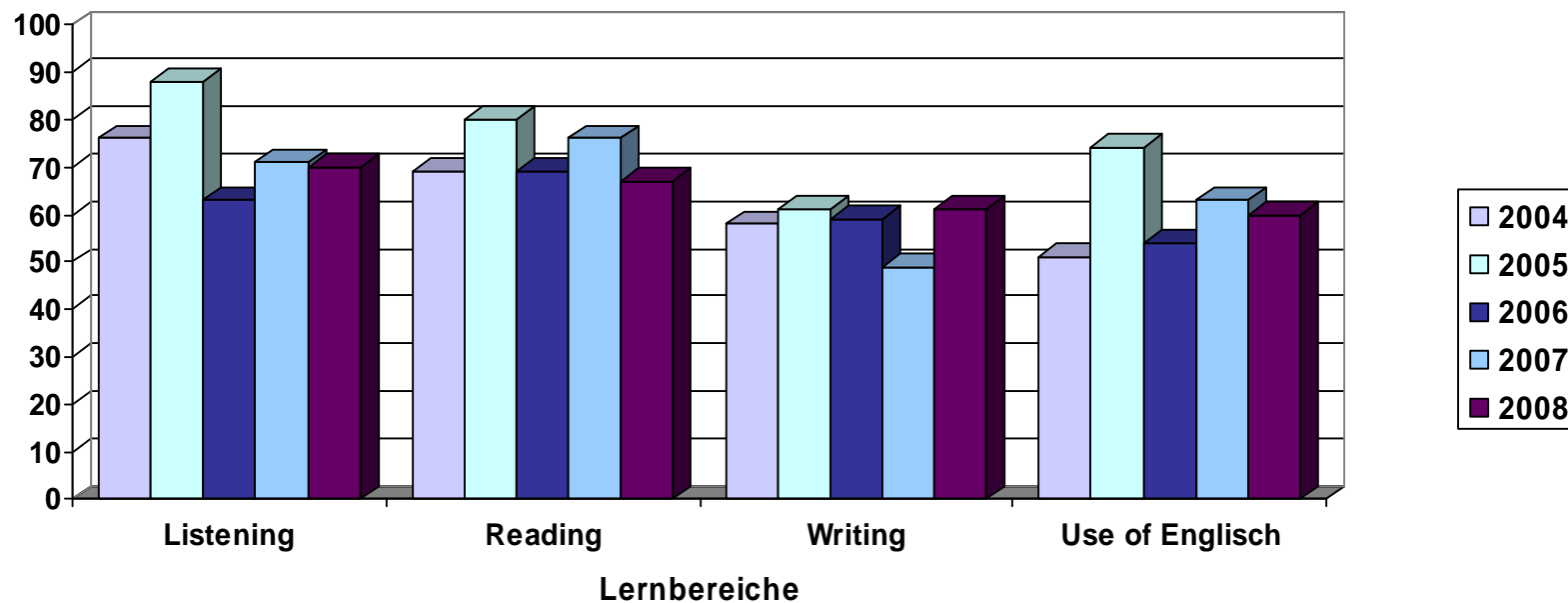
Einzelaufgaben: Vergleich 2004-2008



Jahrgangsstufentest ENGLISCH

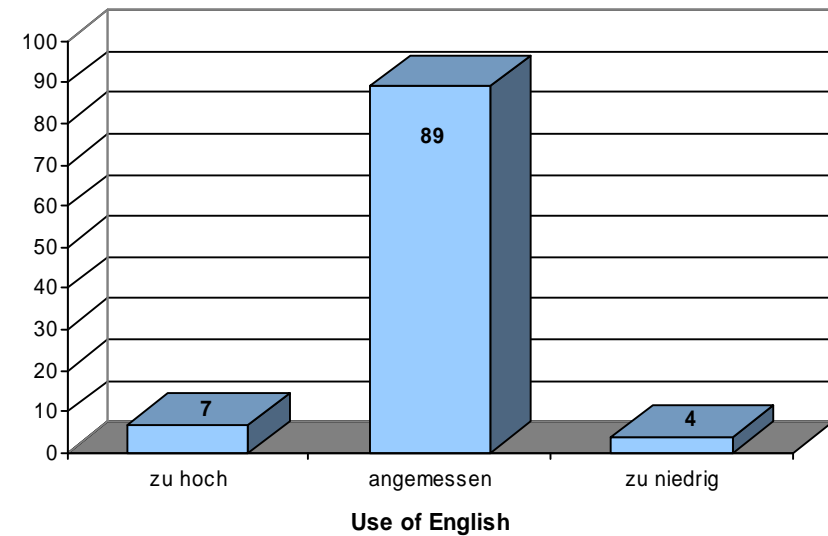
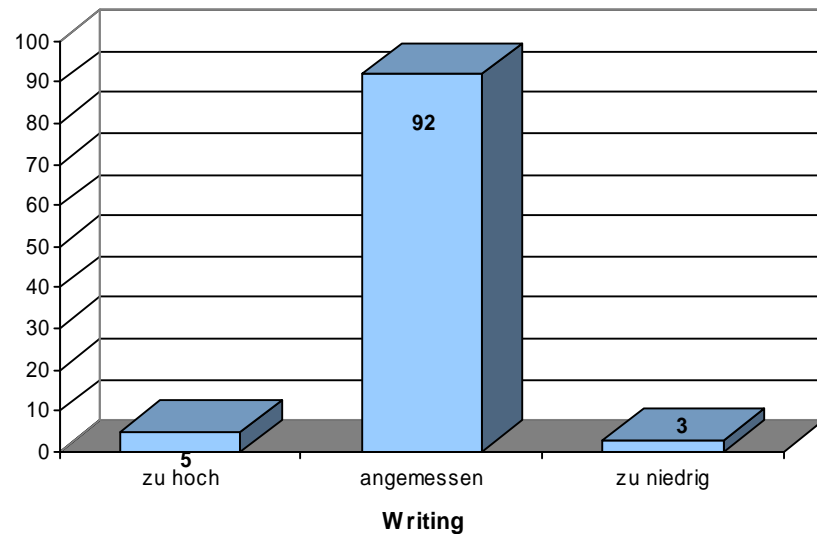
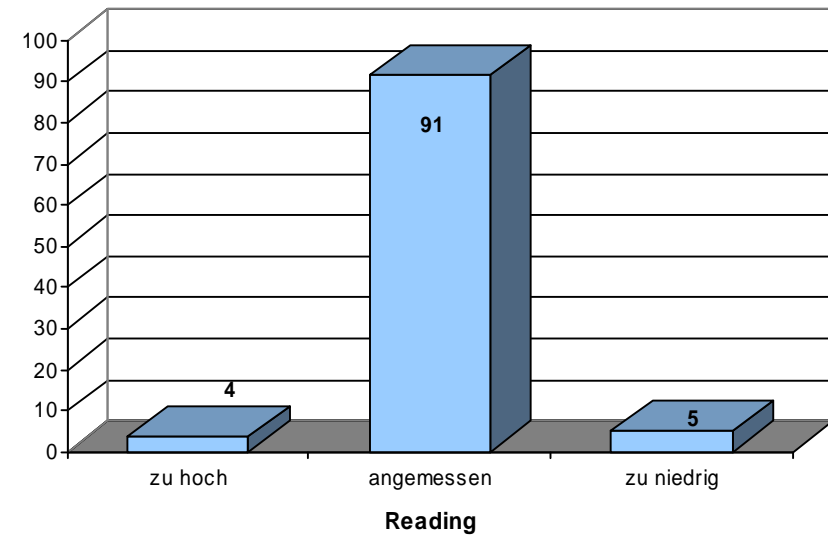
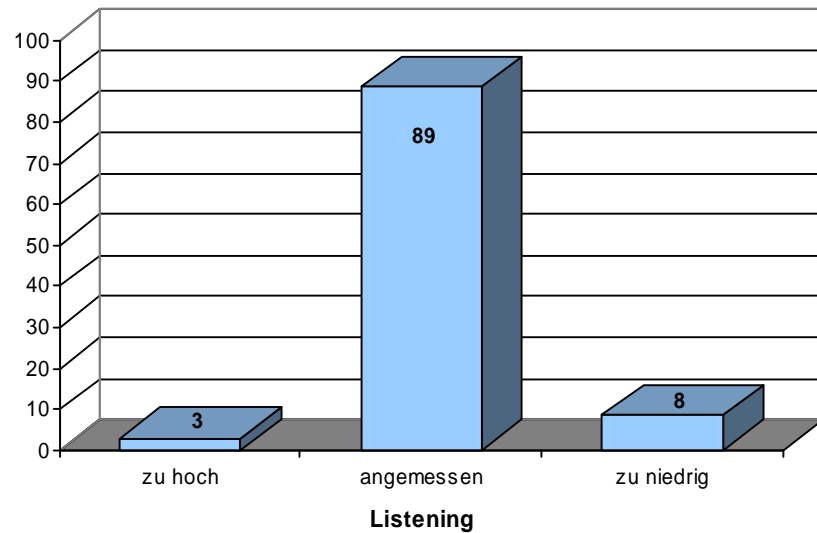
an bayerischen Realschulen (2008)

Lernbereiche: Vergleich 2004-2008



Jahrgangsstufentest ENGLISCH

Rückmeldung der Lehrkräfte: Bewertung des Anforderungsniveaus (in %)



Jahrgangsstufentest ENGLISCH

Rückmeldung der Lehrkräfte: Bewertung des Arbeitszeit (in %)

